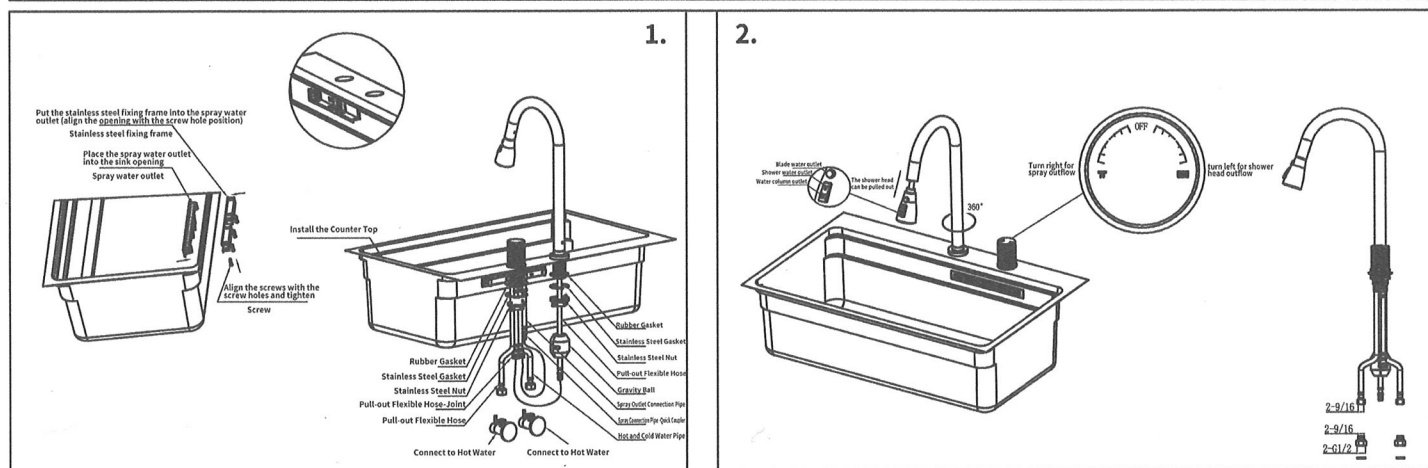


# Faucet Installation and Operation Manual

## Operating Conditions:

1. Cold and hot water pressure: Minimum pressure 0.05MPa (flowing pressure); Maximum pressure 0.75MPa (static pressure).
2. Do not use steam for hot water supply. Water temperature <math>< 85^{\circ}\text{C}</math>.
3. Ambient operating temperature  $0^{\circ}\text{C}\sim 85^{\circ}\text{C}$ . If below  $0^{\circ}\text{C}$ , the faucet may crack, deform, etc. Anti-freezing valves or other equipment can be installed to prevent this. If above  $85^{\circ}\text{C}$ , the faucet surface may suffer from plating falling off, deformation, etc. Stay away from bath heaters and other high-temperature equipment.



## Installation Instructions:

1. For single-hole deck-mounted faucet installation, please refer to Figure 1. Pay attention to the installation order of each part during installation and avoid any missing parts, otherwise it will affect the installation and fixing effect of the faucet.
2. Before installing the faucet, be sure to remove impurities, sludge, sand and other foreign matters in the pre-embedded cold and hot water pipes to avoid clogging and affecting the water outlet function. And clean the surrounding area of the water inlet hole.
3. The product surface is anti-corrosion plating. Be careful not to scratch the surface plating when opening the product packaging: When installing, wrap the surface plating of the product with a soft cloth to avoid scratching.
4. When the faucet is installed on the tabletop, connect the flexible hose to the cold and hot angle valves, paying attention to connect according to the method of left hot and right cold.

## Operating Instructions:

1. Turn the handle to the left to pull out the shower head for water outlet, and turn to the right for a spray; as shown in Figure 2.
2. The water outlet pipe can rotate 360 degrees. The shower head can be pulled out for use. There is a pull-out faucet gravity ball below to pull the shower head back to its original position. The shower head has two level buttons to switch levels; as shown in Figure 2.
3. To ensure durable and long-lasting product, please operate as gently and slowly as possible.
4. If you will not use the faucet for a long time, please turn off the main water valve in your home.

## Maintenance Instructions:

1. When the faucet exterior is dirty, wipe it clean with a neutral detergent diluted with an appropriate amount of water first, then rinse with clean water and finally wipe with a soft cloth. This can prevent stains on the faucet exterior.
2. Do not use abrasive detergents or nylon powders containing coarse particles to scrub the faucet.
3. Acidic detergents can erode the surface plating, so they must not be used for cleaning. If acidic detergents are used to clean tiles, the faucet must be rinsed immediately and wiped dry with a soft dry cloth.
4. When the ambient temperature is below  $0^{\circ}\text{C}$ , please take necessary measures to keep your water equipment warm.
5. Regularly remove the faucet diffuser and clean or remove any impurities to prevent affecting the water outlet.